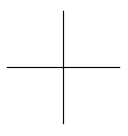
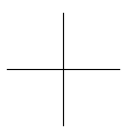


正样
2023.01.16
B01

外部公开

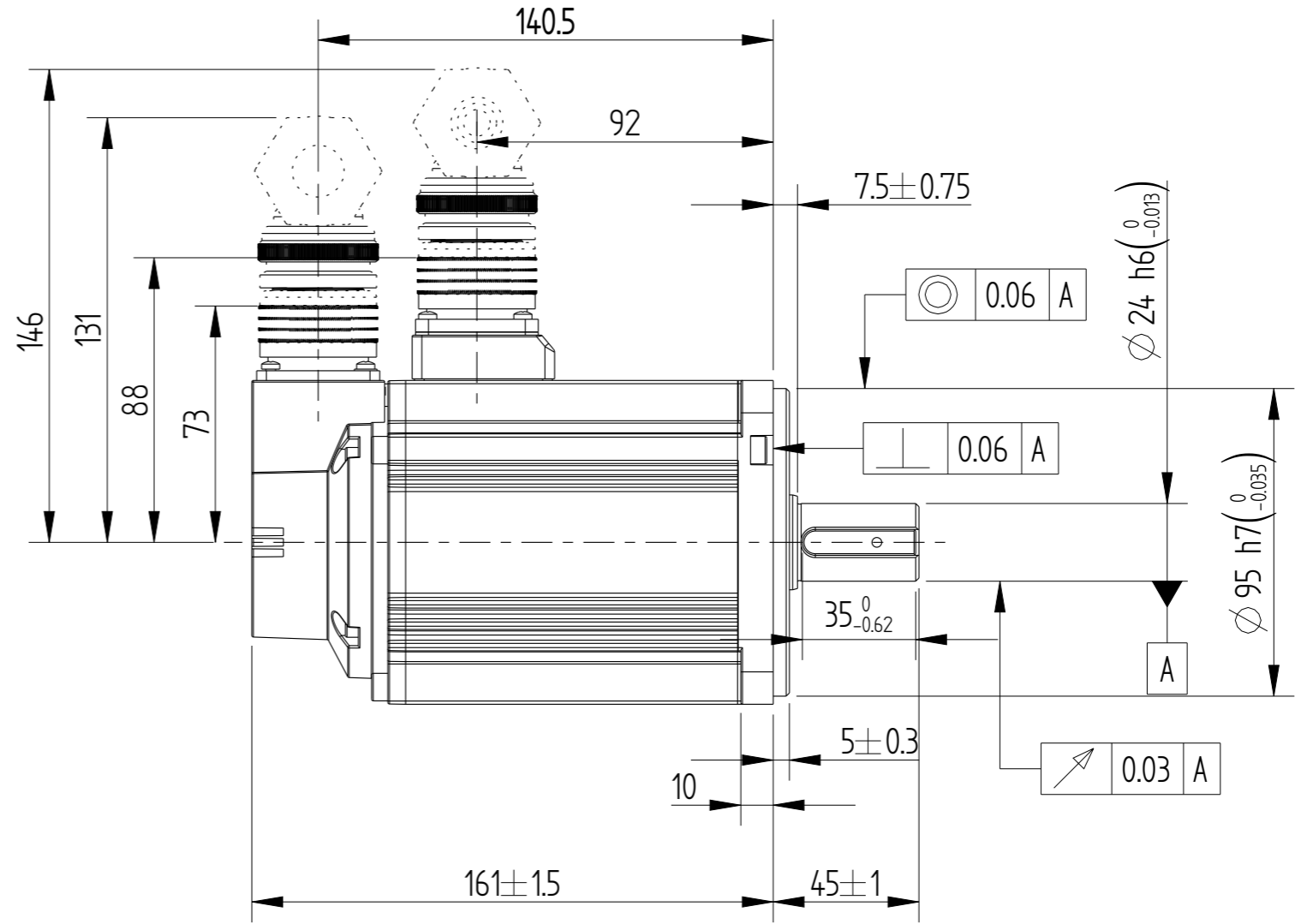
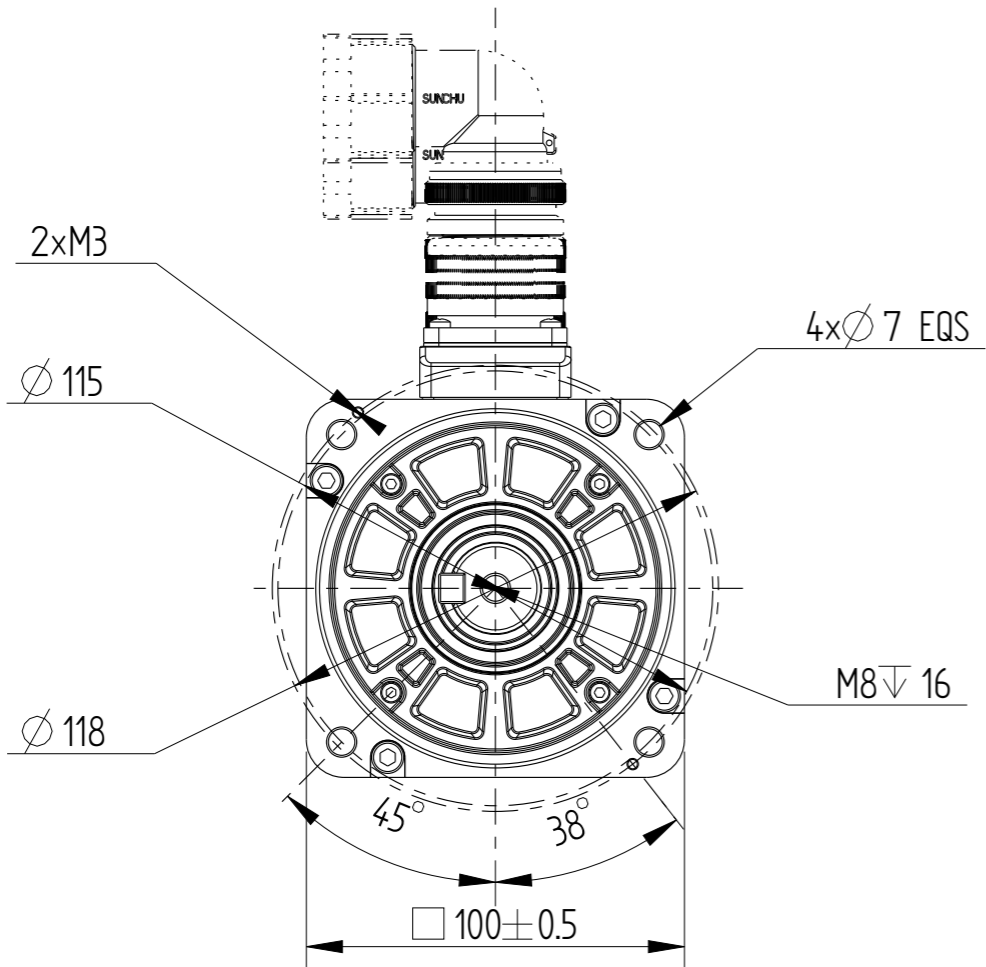


INOVANCE

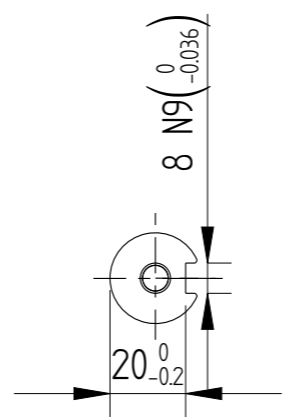
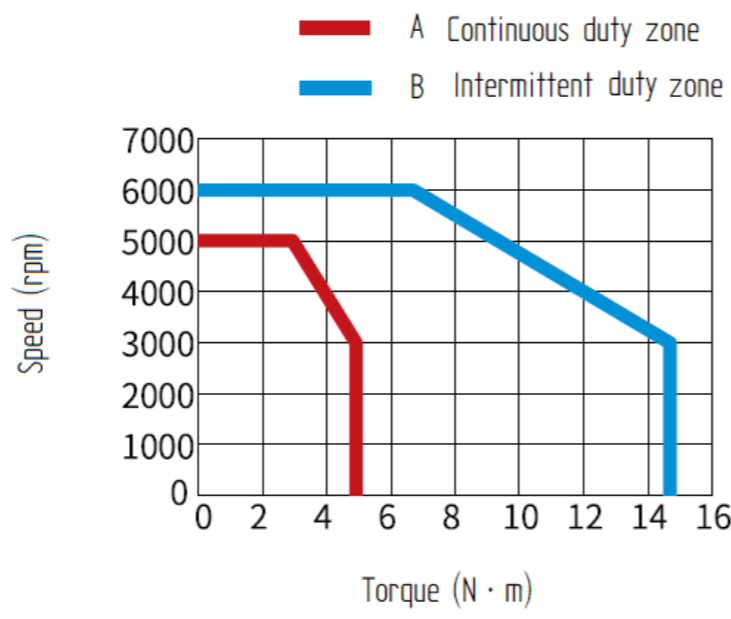
F
A3

Amendment	Description

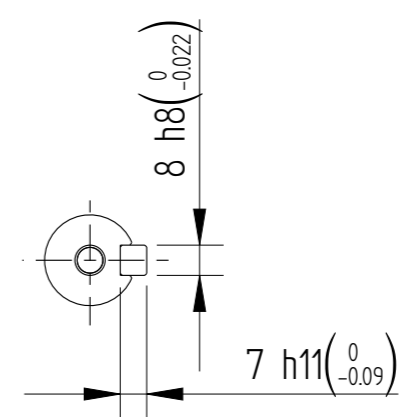
Unit: Millimeter (mm)



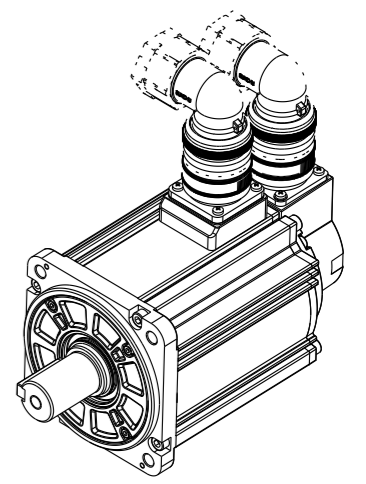
Basic function parameters	
Rated power KW	1.5
Rated voltage V	380
Rated current A	4.2
Peak current at rated speed A	14
Rated torque Nm	4.9
Peak torque at rated speed Nm	14.7
Rated speed rpm	3000
Max speed rpm	6000
Rotor inertia kg·cm ²	2.35±10%
Encoder resolution	26bit
Insulation class	F(155° C)
Protection level	IP67
Static torque of brake Nm	/
Brake power supply	/
Duty cycle	S1
Radial line load N	686
Axial load N	196

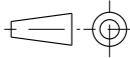


Dimension of shaft end



Dimension of shaft end with key



				Motor Outline Drawing			01118118-WX	
B01	New Archive	/	20230916					
Version	Change method	Changed by	Date	/			Mark	
Design	/							
Check	/							
Craft	/							
Verify	/			Weight	Scale	Version	Page 1 of 1	
Standardization	/			4.65kg	12	B01	Model	MS1H2-15C30□-S631R-INT
Approve	/							